



DUOBOND® RL-eez



MANUAL RL-EEZ
Windshield Removal

DB Imagineering BV
Laarakkerweg 10
NL-5061 JR Oisterwijk
info@duobond.com

MANUAL Windshield Removal



Winch



Suction cup with pulley



Suction cup with fastner



Handheld transmitter



12V Connection cable



Technical data

Nom. Volt: 12DC

Ampere: 8

No load RPM:48

MHz: 868

EMC: 1,0 nF 6,5 µH



Attention, Danger!



Use eye protection during work!



Read the manual and instructions!



Use hand protection during work!

Description of regulatory use

The Duobond RL-eez system is only suitable for cutting polyurethane adhesive to cut out windscreens from vehicles. With wirelessly controlled 12V winch unit, suction cup with pulley and suction cup with fastener. For damage and injury caused by use that does not take place according to the regulations the user is liable.

General safety instructions

Read all safety rules and instructions.

Failure to follow the warnings and instructions can cause an electric shock, fire or serious injury.

Save all safety instructions and manuals for future use.

The term "power tool" used in the warnings refers to power tools for use on power (with cord) and on electric tool for use with a battery (without cord).

Machine specific safety instructions

Users must have had a training / explanation before use by a representative appointed by DB Imagineering BV.

Place the drive unit on the glass before switching on.

Always wear safety goggles because of possible cutting hazards.

If explosive or even flammable substances arise during cutting, then the processing instructions of the material manufacturer must be adhered to unconditionally.

Harmful / toxic substances may occur during work. Touching or inhaling these substances can be dangerous for those who operate the machine or for persons near the machine.

Observe the safety regulations that apply in your country.

Electrical connection and commissioning

The voltage must correspond to the indication on the rating plate.

To switch on, the switch on the remote control is pressed continuously.

Releasing the switch is sufficient to switch the device off again.

Maintenance

When working on the machine, the power plug must always be removed from the socket!

All maintenance and repair work, for which it is required to open the motor housing, may only be carried out by an authorized maintenance workshop.

Customer service and repair: only by manufacturer or service workshops, nearest addresses can be found at: www.duobond.com

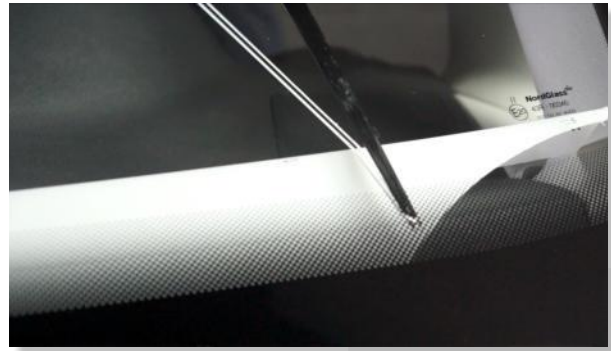
Only use original Duobond spare parts! Order at www.duobond.com

Special hazard description for the environment

Do not dispose of power tools with household waste! Enter the device, accessories and packaging in an environmentally friendly way! Please observe the applicable national regulations.

EU only: According to the European Directive 2002/96 / EC, old electrical appliances must be separated collected and disposed of in an environmentally friendly way.

How to use the RL-eez winch and remote control.



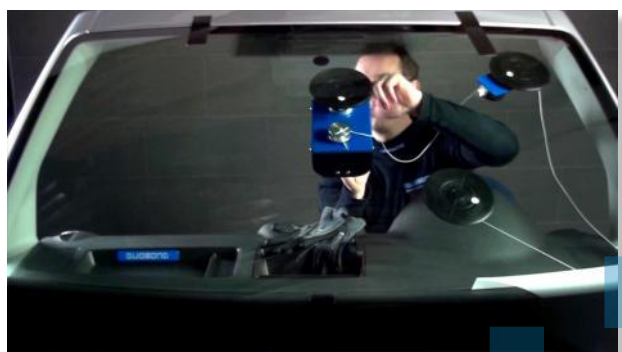
Attach a nylon wire end to the suction cup with fastener on the inside of the window.

Pierce the polyurethane adhesive from the inside to the outside and then draw the screen diagonally about twice wire length to the outside.



Lay the cutting wire from the outside around the window with the wire ends not crossing each other and not twist together. And then place tape on top of the window and body to prevent that the window moves after it has been cut loose.

Position the guide unit at the corners on the inside of the window.



Insert the other wire end through 2 holes in the pulley of the winch and tie it on the inside of the pulley.

Always mount the winch on the inside in the middle of the window so that it can move freely.



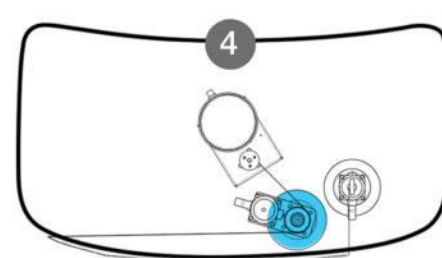
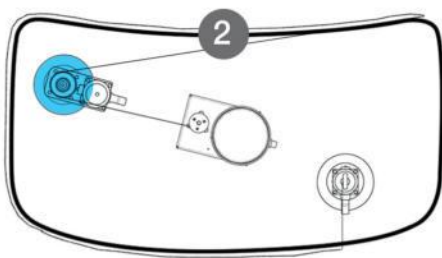
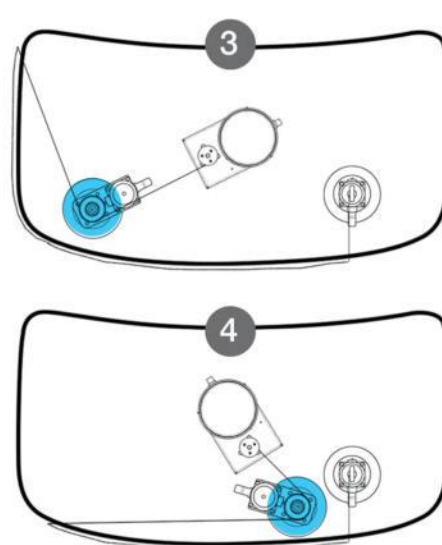
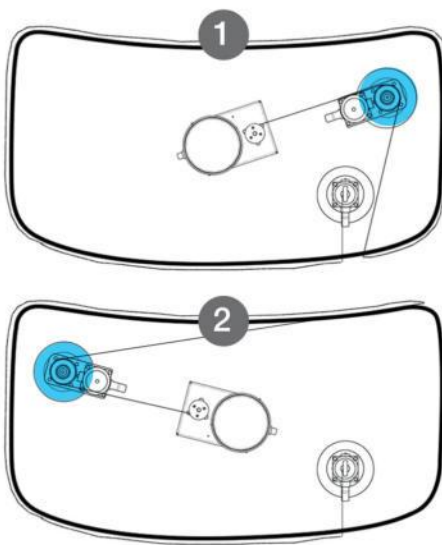
Now connect the 12V output to a 12V power supply with a minimum of 8A rated power.

By operating the remote control, the wire will now be winched and cut through the polyurethane adhesive.



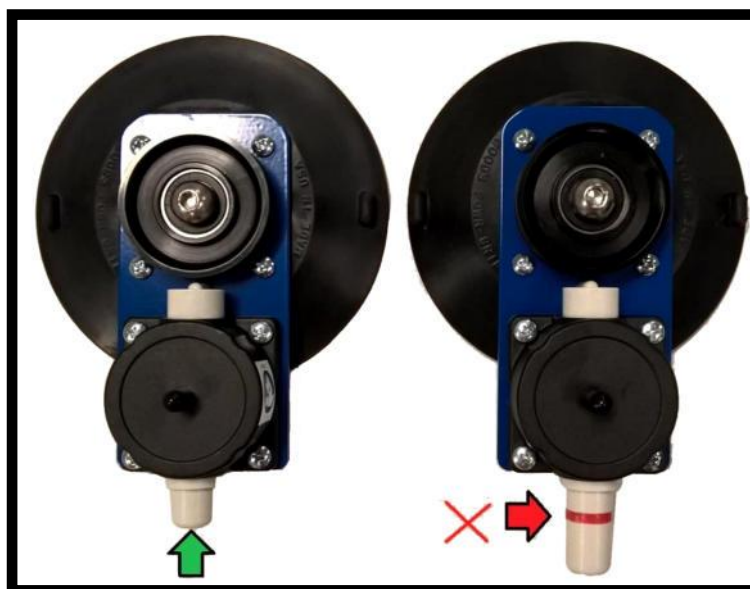
Always position the nylon cutting wire around the suction cup with pulley at a correct angle relative to the winch. The cutting angle changes during cutting. If there is no longer any sharp angle, the suction cup with pulley must be repositioned so that the correct angle is created again.

After use, store the complete RL-eez system clean and dry in the supplied case.



Other operating instructions.

- * Use a cover to protect the dashboard
- * If the pulling tension is too high, the nylon cutting wire may tear. Slowly rewind the cutting wire in the opposite direction, check the cause of the increased resistance and start cutting again.
- * Reduce the resistance by spraying the nylon wire with a little water and soap when it is around the window.
- * Only attach the suction levers to a clean and grease-free window. Ensure that it is securely in place.
- * Never attach the suction levers to windows that are torn on the inside.
- * No other persons may stay in the working area.
- * Use only nylon cutting wire max 1.5mm thick as the cutting wire. The winch is not constructed for steel cutting wires, entangled wires or wires with abrasive materials applied.
- * Do not wrap or guide the cutting wire around body parts, objects or devices not intended for that purpose.
- * Do not use the connecting cable between the winch and the power supply as a handle.
- * Disconnect the connection cable from the winch for transport.
- * Do not wrap the connection cable between the winch and the remote control around people or objects.
- * The parts that are provided with a suction cup are only properly attached once the red line is no longer visible on the vacuum pump. If the suction cup is not properly attached, the part will not work properly and eventually break free.



DATA Sheet

Glass Removal	Serial no.
Machine	
Duobond RL-eez system complete 12v	380012

(D) EG-Konformitätserklärung. Wir erklären in alleiniger Verantwortung, dass dieses Produkt mit den folgenden Normen oder normativen Dokumenten übereinstimmt: 2006/42/EG

(GB) EC-Declaration of Conformity: We declare at our sole responsibility that this product is in conformity with the following standards or standardised documents: 2006/42/EG

(F) CE-Déclaration de conformité communautaire. Nous déclarons sous notre propre responsabilité que ce produit est conforme aux normes ou documents de normalisation suivants: 2006/42/EG

(E) CE-Declaración de conformidad. Declaramos bajo nuestra exclusiva responsabilidad que este product corresponde A las siguientes normas o documentos normalizados: 2006/42/EG

(I) CE-Dichiarazione di conformità. Dichiariamo sotto la nostra esclusiva responsabilità che il presente prodotto è conforme alle norme e ai documenti normativi seguenti: 2006/42/EG

(NL) EG-conformiteitsverklaring. Wij verklaren op eigen verantwoordelijkheid dat dit produkt voldoet aan de volgende normen of normatieve documenten: 2006/42/EG

(S) EG-konformitetsförklaring. Vi förklarar i eget ansvar, att denna produkt stämmer överens med följande normer och normativa dokument: 2006/42/EG

(FIN) **EY-standardinmukaisuusvakuutus.** Vakuutamme yksinvastuullisina,

että tuote on seuraavien standardien ja normatiivisten ohjeiden mukainen:

2006/42/EG

(DK) **EF-konformitetserklæring:** Vi erklærer at have alene ansvaret for, at dette product er i

overensstemmelse med de følgende normer eller normative dokumenter: 2006/42/EG

(N) **CE-Konformitetserklæring.** Vi erklærer på eget ansvar at dette produktet er i overensstemmelse

med følgende normer eller normative dokumenter: 2006/42/EG

(P) **CE-Declaração de conformidade:** Declaramos, sob a nossa exclusiva responsabilidade, que

este produto corresponde às normas ou aos documentos normativos citados a seguir: 2006/42/EG

(RUS) **Декларация соответствия ЕС.** Мы заявляем с исключительной ответственностью, что

данный продукт соответствует следующим нормам или нормативным документам: 2006/42/EG

(CZ) **ES prohlášení o shodě.** Prohlašujeme s veškerou odpovědností, že tento výrobek je ve shodě s

následujícími normami nebo normativními dokumenty: 2006/42/EG

(PL) **Oświadczenie o zgodności z normami UE.** Niniejszym oświadczamy na własną

odpowiedzialność, że produkt ten spełnia następujące normy lub dokumenty normatywne: 2006/42/EG

Dhr R. Schellekens

21.1.2016

Managing Director

Duobond International BV

Laarakkerweg 10

NL-5061 JR Oisterwijk